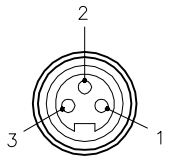

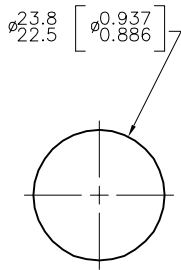
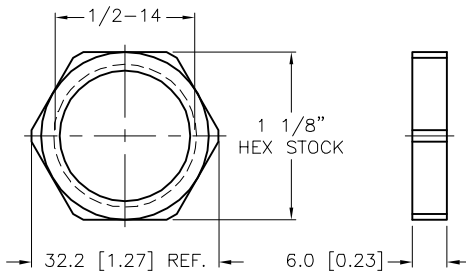
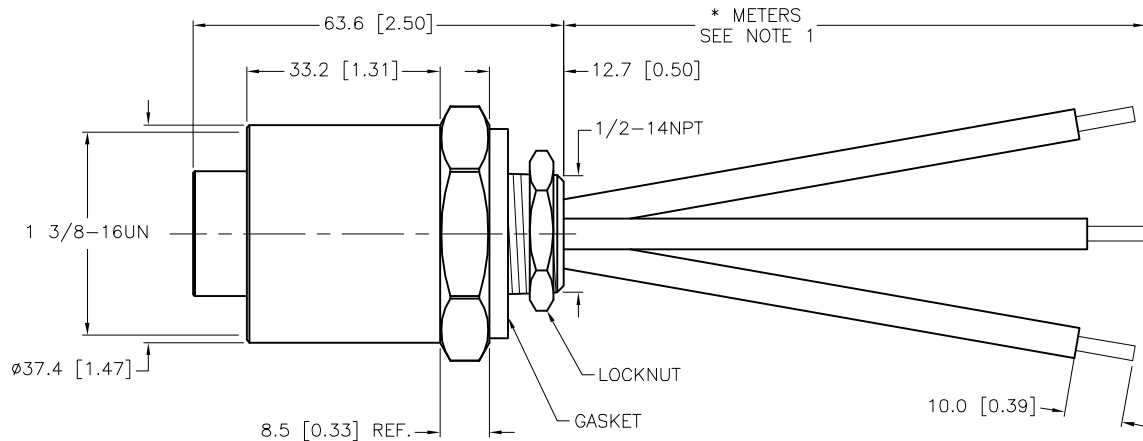
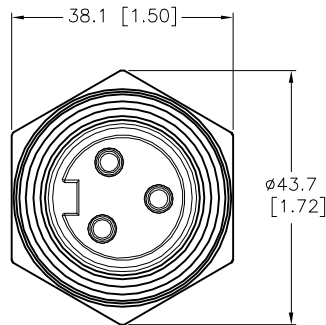


FEMALE END VIEW	PANEL CUTOUT	LOCKNUT	SPECIFICATIONS	
 <p>1 = BLACK 2 = GREEN/YELLOW 3 = WHITE</p> 			CONTACT CARRIER MATERIAL	PVC
			CONTACT MATERIAL/PLATING	BRASS or COPPER/GOLD
			HOUSING MATERIAL/PLATING	BRASS/NICKEL
			GASKET MATERIAL	NITRILE (BUNA-N)
			RATED CURRENT [A]	30.0 A
			RATED VOLTAGE [V]	600 VAC
			CONDUCTOR INSULATION MATERIAL	PVC
			NUMBERS OF CONDUCTORS [AWG]	3x12 AWG
			TEMPERATURE RATING	-40°C to +105°C (-40°F to +221°F)
			PROTECTION CLASS	MEETS NEMA 1,3,4,6P AND IEC IP67, IP68, IP69K
			MAXIMUM PANEL THICKNESS	6.0mm [.236]
			APPROVALS AND CERTIFICATIONS	UL 2237, CE



CABLE LENGTH	TOLERANCE*
ALL LENGTHS	+ 4% (OR 50mm) OF LENGTH - 0% (OR 0mm) OF LENGTH WHICHEVER IS GREATER
STRIP LENGTH	TOLERANCE*
0-7mm	±0.5mm
8-29mm	±1.0mm
30-49mm	±2.0mm
50-69mm	±3.0mm
70-100mm	±4.0mm
OVER 100mm	±5.0mm
* UNLESS OTHERWISE SPECIFIED	

NOTES:

1. "*" INDICATES LEAD LENGTH IN METERS. CONTACT TURCK TO ORDER SPECIFIC LENGTHS.

CAUTION:
RISK OF ELECTRICAL SHOCK
DO NOT DISCONNECT UNDER LOAD

SOURCE DRAWING - FOR REFERENCE ONLY

RELATED DOCUMENTS		3RD ANGLE PROJECTION		<div>THIS DRAWING IS CONFIDENTIAL AND THE PROPERTY OF TURCK INC. USE OF THIS DOCUMENT WITHOUT WRITTEN PERMISSION IS PROHIBITED.</div> <div>TURCK</div>		<div>3000 CAMPUS DRIVE MINNEAPOLIS, MN 55441 1-800-544-7769 (763) 553-7300 (763) 553-0708 fax www.turck.us</div>					
1.											
2.		<div>ALL DIMENSIONS DISPLAYED ON THIS DRAWING ARE FOR REFERENCE ONLY</div> <div>CONTACT TURCK FOR MORE INFORMATION</div>		DRFT	RDS	DATE	07/21/08	DESCRIPTION GKDF 32-*M/14.5/NPT			
3.				APVD		SCALE	1=1.3				
4.				UNIT OF MEASUREMENT MILLIMETER [INCH]				IDENTIFICATION NO.		REV H	
				DO NOT SCALE THIS DRAWING							
MATERIAL											
SEE SPECIFICATIONS											
FINISH											
SEE SPECIFICATIONS											
						FILE: 777018337		SHEET 1 OF 1			

H	UPDATE TO RATED CURRENT	RDS	04/25/19	69363
REV	DESCRIPTION	BY	DATE	ECO. NO.